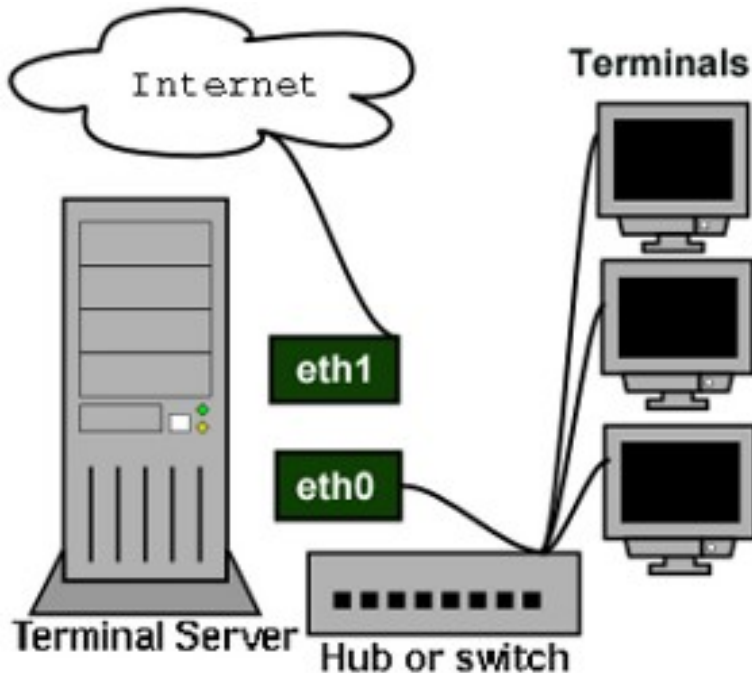


The *Linux Terminal Server Project* is a software package that allows many people to use the same computer simultaneously. LTSP is a flexible, cost-effective solution that is enabling schools, businesses and all kinds of organisations all over the world to install and deploy desktop workstations easily. A growing number of Linux distributions include LTSP ready and working out of the box.



Shiny new thin clients and legacy PCs alike can be used to browse the web, send and receive e-mail, create documents and graphics and run other desktop applications. LTSP not only improves Total Cost of Ownership (TCO), but more importantly, provides increased value over traditional computing solutions. LTSP workstations can run applications from Linux *and* Windows servers.

Linux thin clients have proved to be extremely reliable because they're tamper-proof and Linux viruses are virtually non-existent. The thin clients also have very low power consumption as they contain no moving parts like hard or optical drives and have only minimal memory. Due to this, thin clients are also quieter and cooler than conventional desktop PCs.

LTSP is distributed under the GNU General Public License, meaning it's free of licensing fees and always will be. In addition, LTSP has comprehensive free and professional support and is developed by a very active global community.

At Bristol Wireless we've been using LTSP for some 10 years. We've found it to be very reliable both for running our lab (office) in Bristol, as well as providing public access/training suites in both fixed locations and at indoor and outdoor events all around the country.

Using redundant hardware for thin clients can breathe new life into old kit and extend its usefulness, stopping it from becoming waste electrical and electronic equipment (WEEE) for longer. LTSP also has very low power requirements: for example, our **20 workstation mobile suite** has the power consumption of **one modern desktop PC**.

Further reading

<http://www.bristolwireless.net/ltsp/>

<http://www.ltsp.org/>

